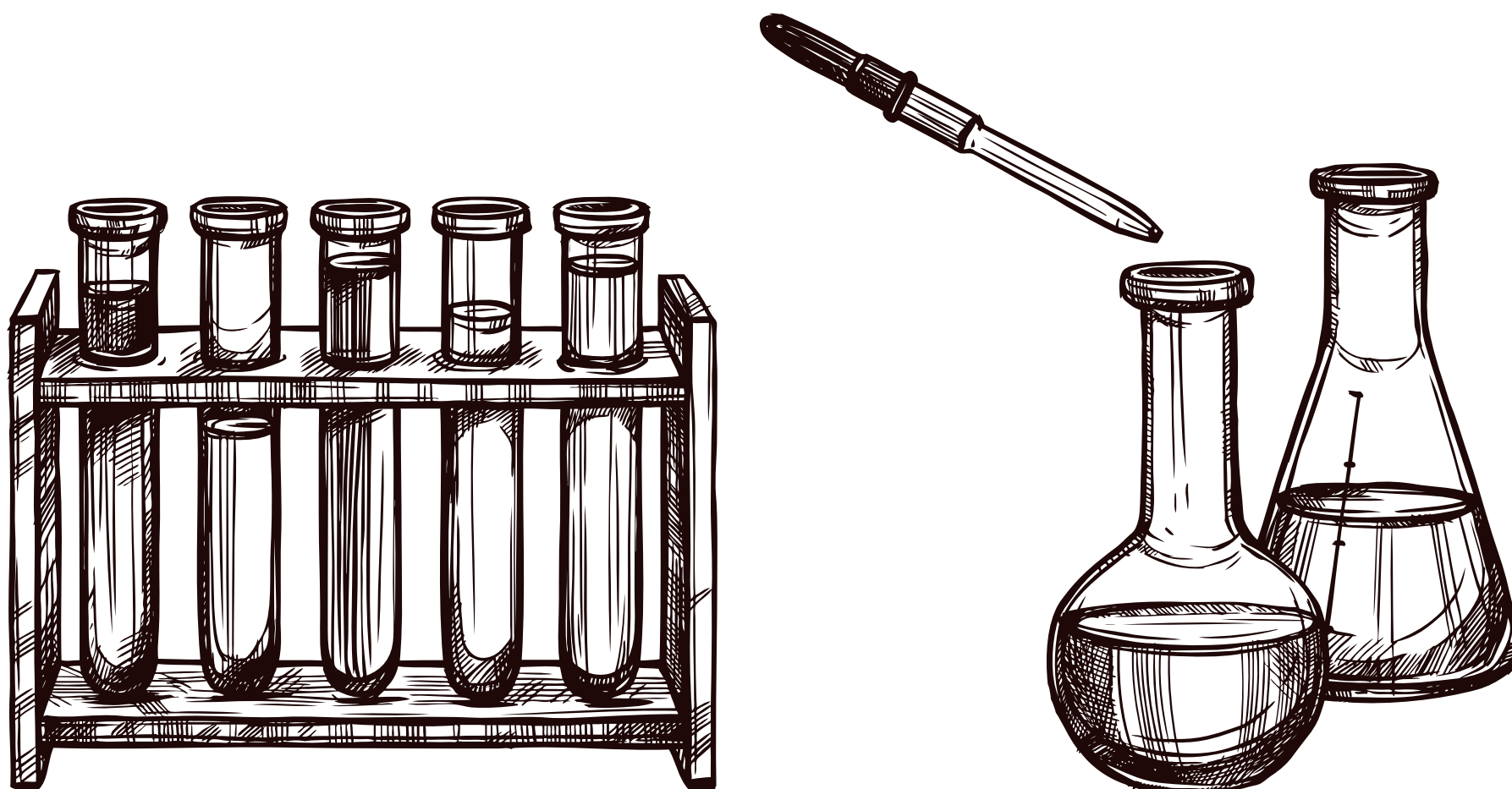




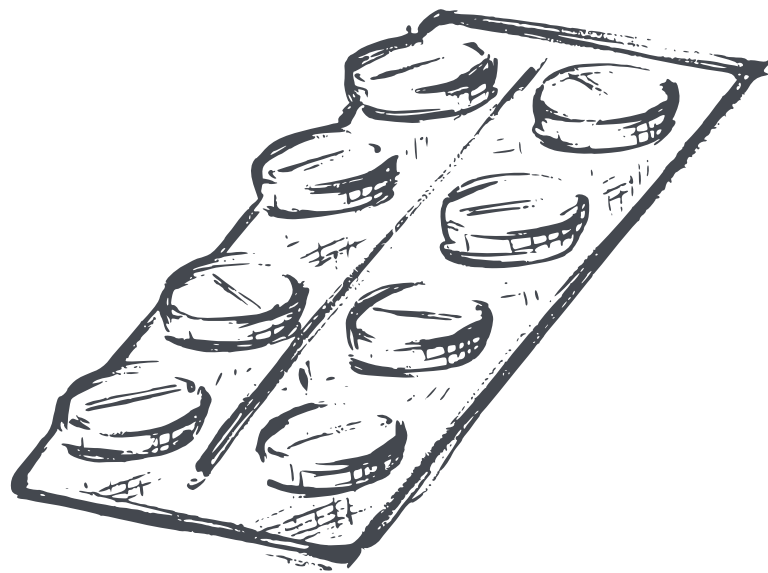
What is

immunosuppression?

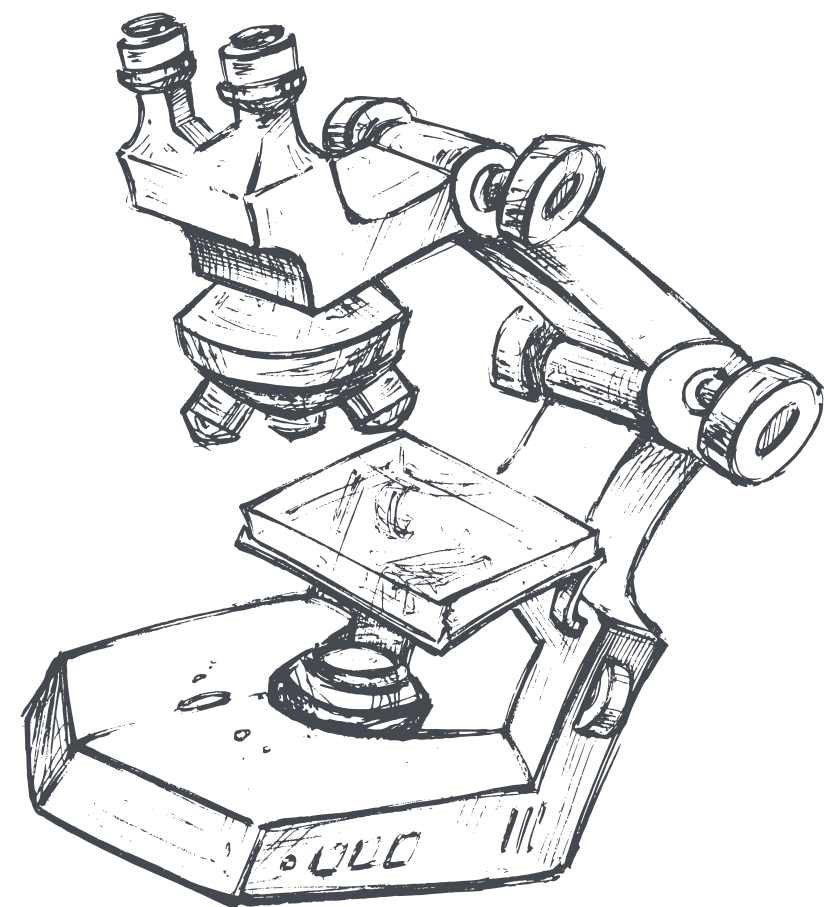
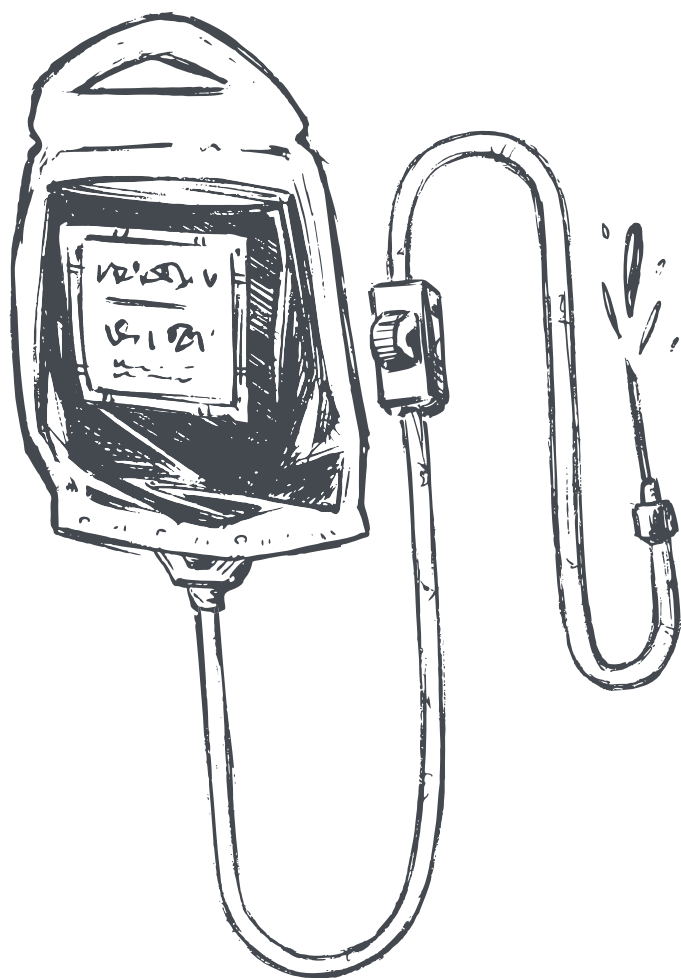


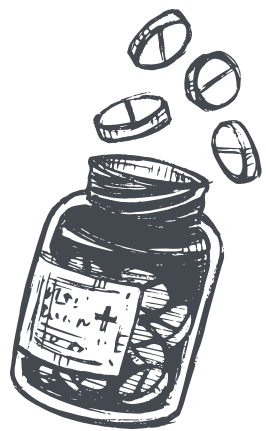
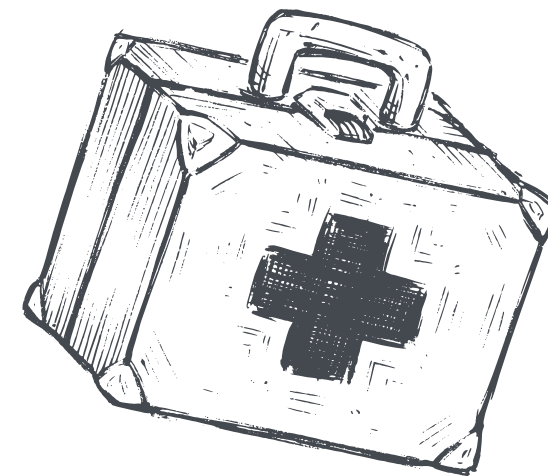
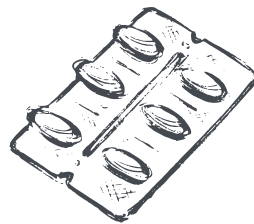
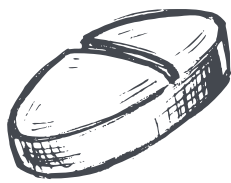
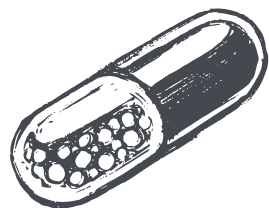
with the unconditional
unrestricted grant of





The reduction in the normal immune function to lower the probability of organ rejection

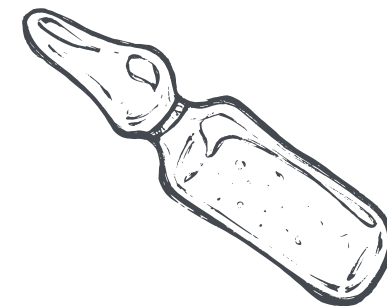




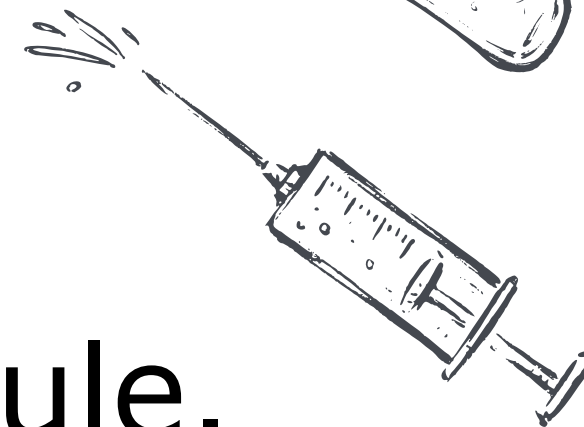
Immunosuppressants are necessary medications that are responsible for keeping the new kidney healthy and functioning.



To keep the new organ in good shape a patient must adhere

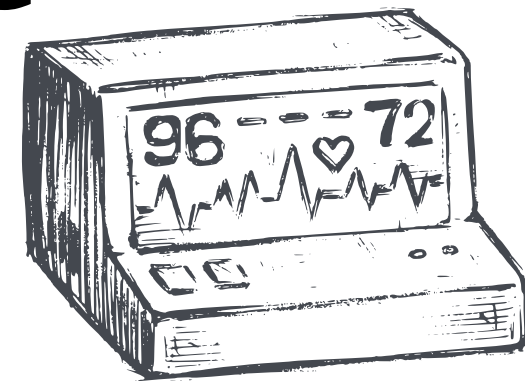
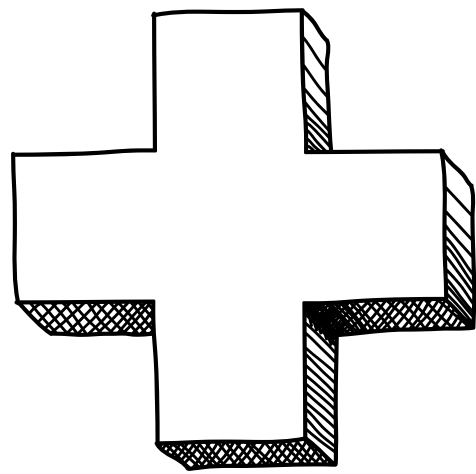


to the medication schedule.

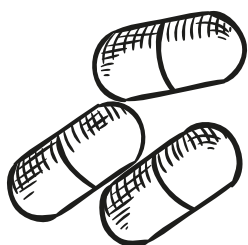




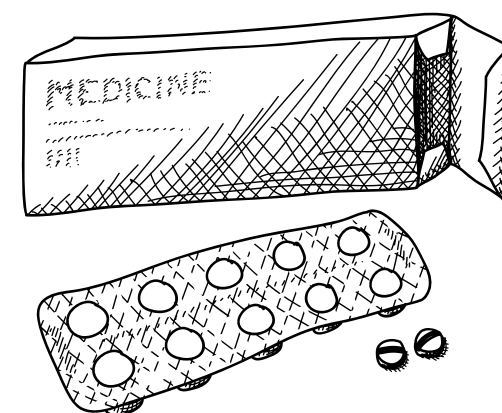
Immunosuppressive therapy is divided into:



Induction therapy



Intense immunosuppression to prevent acute rejection



in the period around the surgical procedure

Maintenance therapy



Immunosuppression to prevent rejection over time, necessary



throughout the post-transplant period